

AN-100

Owner's Manual





Important Safeguards



CAUTION
RISK OF ELECTRIC SHOCK
DO NOT OPEN



CAUTION: To reduce the risk of electric shock, do not remove the cover. No user-serviceable parts inside. Refer servicing to qualified personnel.

WARNING: To prevent fire or electric shock, do not expose this equipment to rain or moisture.



AVIS
RISQUE DE CHOC
ELECTRIQUE
NE PAS OUVRIR



ATTENTION: Pour éviter les risques de choc électrique, ne pas enlever le couvercle. Aucun entretien de pièces intérieures par l'utilisateur. Confier l'entretien au personnel qualifié.

AVIS: Pour éviter les risques d'incendie ou d'électrocution, n'exposez pas cet article à la pluie ou à l'humidité.

EXPLANATION OF GRAPHICAL SYMBOLS



The lightning flash with arrowhead symbol, within an equilateral triangle, is intended to alert the user to the presence of uninsulated "dangerous voltage" within the product's enclosure that may be of sufficient magnitude to constitute a risk of electric shock to humans.



The exclamation point, within an equilateral triangle, is intended to alert the user to the presence of important operating and maintenance (servicing) instructions in the literature accompanying the appliance.

EXPLICATION DES SYMBOLES GRAPHIQUES



Le symbole éclair avec point de flèche à l'intérieur d'un triangle équilatéral est utilisé pour alerter l'utilisateur de la présence à l'intérieur du coffret de "voltage dangereux" non isolé d'ampleur suffisante pour constituer un risque d'électrocution.



Le point d'exclamation à l'intérieur d'un triangle équilatéral est employé pour alerter les utilisateurs de la présence d'instructions importantes pour le fonctionnement et l'entretien (service) dans le livret d'instruction accompagnant l'appareil.

DATE OF MANUFACTURE

The date of manufacture of this Anchor Audio product can be determined by the seven or eight digit serial number code. The fifth and sixth digits from the right denote the year, the seventh digit (letter) from the right denotes the month (A=Jan, B=Feb, etc.) Example: "XD960083" states that the unit was manufactured in April of 1996. An "X" may or may not exist as the eighth digit (letter) and has no significance in the serial number or date code.

Thank you for choosing an Anchor Audio portable sound system. Our products incorporate state-of-the-art design and the finest quality of materials and workmanship. We're proud of our products and appreciate the confidence which you have shown by selecting an Anchor system.

I hope you'll take a few of minutes to review this manual. We've incorporated several unique features into our products, and your knowledge of how to use them will enhance the performance and your enjoyment of the system.



David Jacobs, President on behalf of all Anchor employees



Quick Use Guide

The AN-100 monitor is used to amplify the signal from a microphone, electronic musical instrument or line-level sources (cassette, CD, VCR, etc). You'll need a connection cable and an AC outlet.

Here's how easy it is to use:

1. Place the AN-100 at desired location.
2. Set volume control on front of speaker to minimum before turning on the power.
3. Plug the power cord into a grounded 115 volt outlet (220 volt outlet for export model).
4. Plug a microphone into the MIC input jack, or an audio source into the INST or LINE 1 / LINE 2 jacks.
5. Turn the power switch on the rear panel "ON" (the red LED on front panel should light).
6. Adjust the volume, bass and treble controls. for desired sound.

Problems?
Consult the
troubleshooting
section on the
back page of
this manual.

To operate the wireless mic system on model AN-100W see "Wireless Operation" on pages 8 and 9. And for more detailed instructions, see the "Operation" section beginning on page 6.



Getting Started

Inspection and inventory of your system

Check unit carefully for damage which may have occurred during transit. Each Anchor product is carefully inspected at the factory and packed in a special carton for safe transport.

Inventory

- AN-100 powered monitor
- Warranty and registration card

All damage claims must be made with the freight carrier.

Notify the freight carrier immediately if you observe any damage to the shipping carton or product. Repack the unit in the carton and await inspection by the carrier's claim agent. Notify your dealer of the pending freight claim.

Returning your unit for service or repairs

Should your unit require service, contact your dealer or our Customer Service Department at (310) 533-5984 to obtain a Return Authorization (RA) number. All shipments to Anchor must include an RA number and must be shipped prepaid. *C.O.D. shipments will be refused and returned at your cost.*

Warranty registration

Please fill out the warranty card and return it with a copy of your invoice to Anchor's Customer Service Department. This will activate your limited two year warranty.

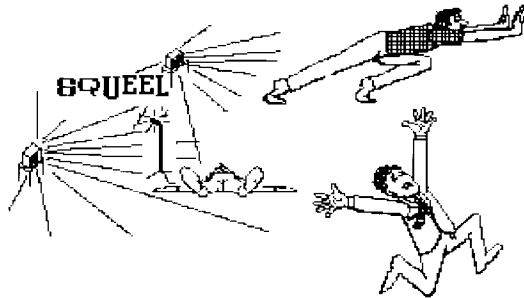
Save the shipping carton and packing materials. They were specially designed to ship your unit safely.



Feedback Information

What causes feedback?

Feedback is a ringing, howling, or shrill sound that is self-generated by the sound system. It is the result of sound from the speakers being picked up by the microphone(s) in use and then re-amplified by the system. This can form a self-sustaining loop that can damage the sound system if allowed to continue.



How to prevent feedback

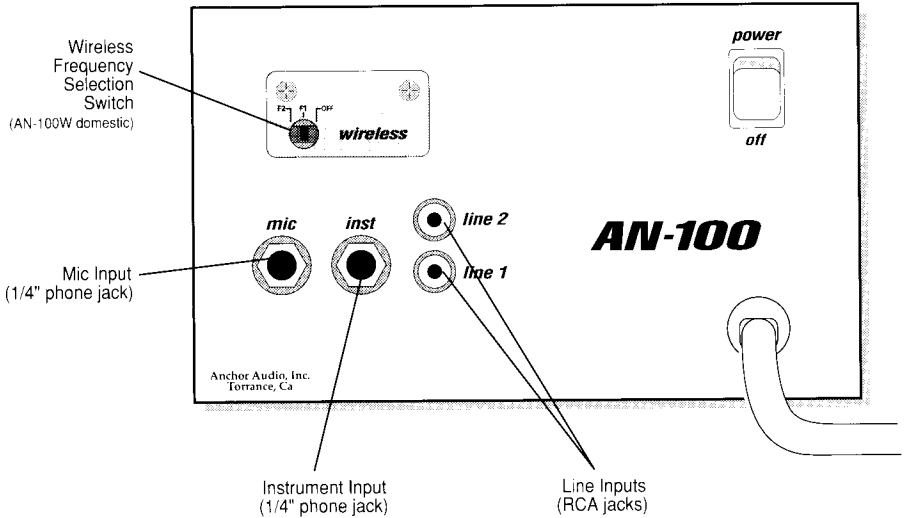
ALWAYS STAND BEHIND THE SPEAKER
WHEN USING A MICROPHONE.

CAUTION: *Feedback can damage your equipment and may be hazardous to your hearing. To avoid feedback, always make sure volume controls are at minimum before turning unit on. If feedback occurs, immediately reduce the volume.*



Operation

AN-100 Back Panel



Operating the sound system

1. Place the AN-100 at desired location.
2. Set volume control on front of speaker to minimum before turning on the power.
3. Plug the power cord into a grounded 115 volt outlet (220 volt outlet for export model).
4. Plug a microphone into the MIC input jack, or an audio source into the INST or LINE 1 / LINE 2 jacks.
5. Turn the power switch "ON" (the red LED on front panel should light).
6. Adjust the volume, bass and treble controls for desired sound.

ALWAYS use shielded audio cables on input connections to prevent interference



Operation

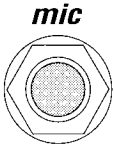
Line Inputs (summing)

The line-level RCA input jacks may be used with audio sources like computers, VCR's, and cassette tape or compact disc players.



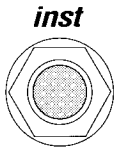
The inputs may be used for two separate sources, or they may be used to sum L+R stereo outputs to a mono signal without the need for adapters.

Mic Input



An unbalanced, low impedance microphone input. For use with the MIC-90P or other mics that have a 1/4" phone plug.

Instrument Input



The instrument input (1/4"-phone jack) is for guitars, keyboards or any instrument with an electronic transducer. It may also be used for wireless microphone receivers. The instrument input has a higher sensitivity than the line input.

Note: All connections must be made with shielded cable to avoid hum, buzzing, or radio interference.

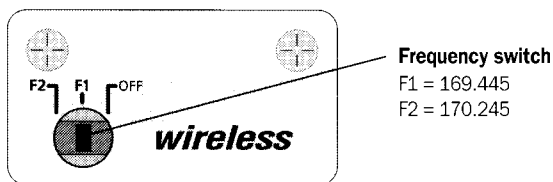


Wireless Operation

Setting up the wireless system

Set the frequency of the receiver.

The wireless receiver is mounted inside the AN-100. The control panel will have the label shown below, which allows access to the frequency selection switch.



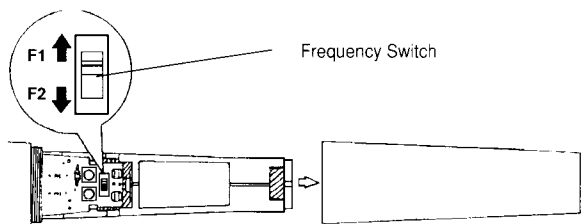
1. Set the frequency of the receiver to either of the two channels, F1 or F2.

If you experience ongoing interference problems with your wireless system, the selected frequency may be incompatible with other RF systems in your area. Try the other channel.

Set the frequency of the transmitter.

During use, make sure the transmitter you are using is set to the same frequency as the receiver as set above.

HANDHELD: Set the frequency switch inside the battery compartment to match the channel of the receiver. Replace the cover—but *don't overtighten!*



BODY-PACK: The power/frequency switch on the transmitter determines the frequency. During use, set the switch to match the frequency of the receiver.



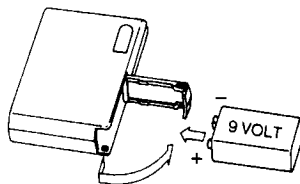
Wireless Operation

Replacing the transmitter battery

Note: The transmitter power switch must be in the OFF position!

HANDHELD: Unscrew the battery compartment cover on the lower end of microphone. Install a fresh 'AA' alkaline battery and replace the cover.

BODY-PACK: Open battery cover on the side of the transmitter box and insert a fresh 9 Volt alkaline battery. Close the cover.



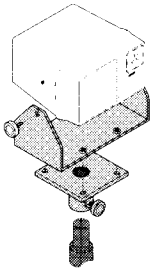
Operating the wireless microphone system

1. If you are using the bodypack transmitter, insert the plug from the mic into the jack marked "MIC" on the transmitter.
2. Set volume control on the front of the AN-100 to minimum.
3. Switch the handheld transmitter to ON, or the body-pack transmitter to F1 or F2 frequency as determined on page 8.
4. Turn the AN-100 power switch ON.
5. Adjust the volume control to desired volume.

Caution: Harmful feedback may occur when walking in front of a sound system or speaker with a wireless microphone. Always point mic away from speakers.



Accessories

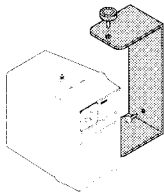


SB-1 Swivel Stand Mounting Bracket

The SB-1 bracket can be used to mount the AN-100 to a wall, ceiling or on a speaker stand (stand adapter included).

MSB-201 Combination Mic/Speaker Stand

Floor stand with 33" adjustable boom. Doubles as speaker stand when combined with SB-1 mounting bracket



SB-3 Swivel Wall Mounting Bracket

Used for mounting the AN-100 to the wall or ceiling.

SB-360 Swivel (360°) Wall Mounting Bracket

Used for mounting the AN-100 to the wall or ceiling.

RM-1 Single Rackmount Kit

RM-12 Dual Rackmount Kit

Rackmount kits allow mounting of AN-100 monitors in a standard equipment rack, three spaces high (5-1/4"). The rackmount kits are adjustable (front/back), and include mounting hardware. Color: satin black.

MIC-90P Handheld Microphone

Anchor's dynamic, balanced, low impedance microphone with a unidirectional pick-up pattern. Comes with a 20' cable with 1/4"-phone plug and mic clip.

SS-250 Speaker Stand

Adjustable stand made of black, anodized aluminum.

CC-100 Carry Bag

Cordura nylon bag with storage compartment for AN-100.

AK-100 Accessory Kit for AN-100

Includes MIC-90P microphone, CC-100 bag, MSB-201 mic/speaker stand and an SB-1 mounting bracket.



Specifications

Rated power output:	25 watts continuous 45 watts dynamic
Sensitivity for rated output:	
Line:	-20 dBV (100 mVrms)
Microphone:	-43 dBV (7.5 mVrms)
Instrument:	-30 dBV (30 mVrms)
Frequency response:	65 Hz – 18 kHz \pm 3dB
Max SPL @ rated power:	101 dB @ 1 meter
Speaker type:	4.5 inch woofer, 10mm dome tweeter
Inputs	
Line inputs (2):	Hi-Z, unbalanced, RCA (summing L+R)
Microphone input:	Lo-Z, unbalanced, 1/4"-phone
Instrument input:	(3k), unbalanced, 1/4"-phone
AC Power requirements	110 - 125 VAC, 50/60 Hz 208 - 240 VAC, 50/60 Hz (50 watts max)
Dimensions (HWD):	5.25 x 8.4 x 9", 13 x 21 x 23 cm
Weight:	8.5 lbs, 3.8 Kg

Specifications subject to change without notice.



Troubleshooting Guide

Having trouble with the sound system?

Condition

Possible Solution

No sound (power LED not lit):

- turn POWER switch on
- plug in power cord

No sound (power LED lights):

- check for output from source
- make sure all cables are completely plugged in
- increase volume control

Distorted sound:

- check input cable connection
- lower input signal level

Excessive hum or noise:

- use shielded input cable

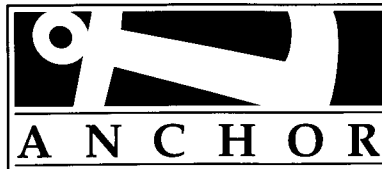
Having trouble with the wireless system?

Condition

Possible Solution

No sound:

- confirm transmitter power switch is set to on for handheld, F1 or F2 for body-pack
- turn up volume control
- plug microphone into body-pack transmitter
- turn sound system on
- replace mic/transmitter battery



ANCHOR Audio, Inc. (310) 533-5984

100-0035-000 / Revision B, 11/96